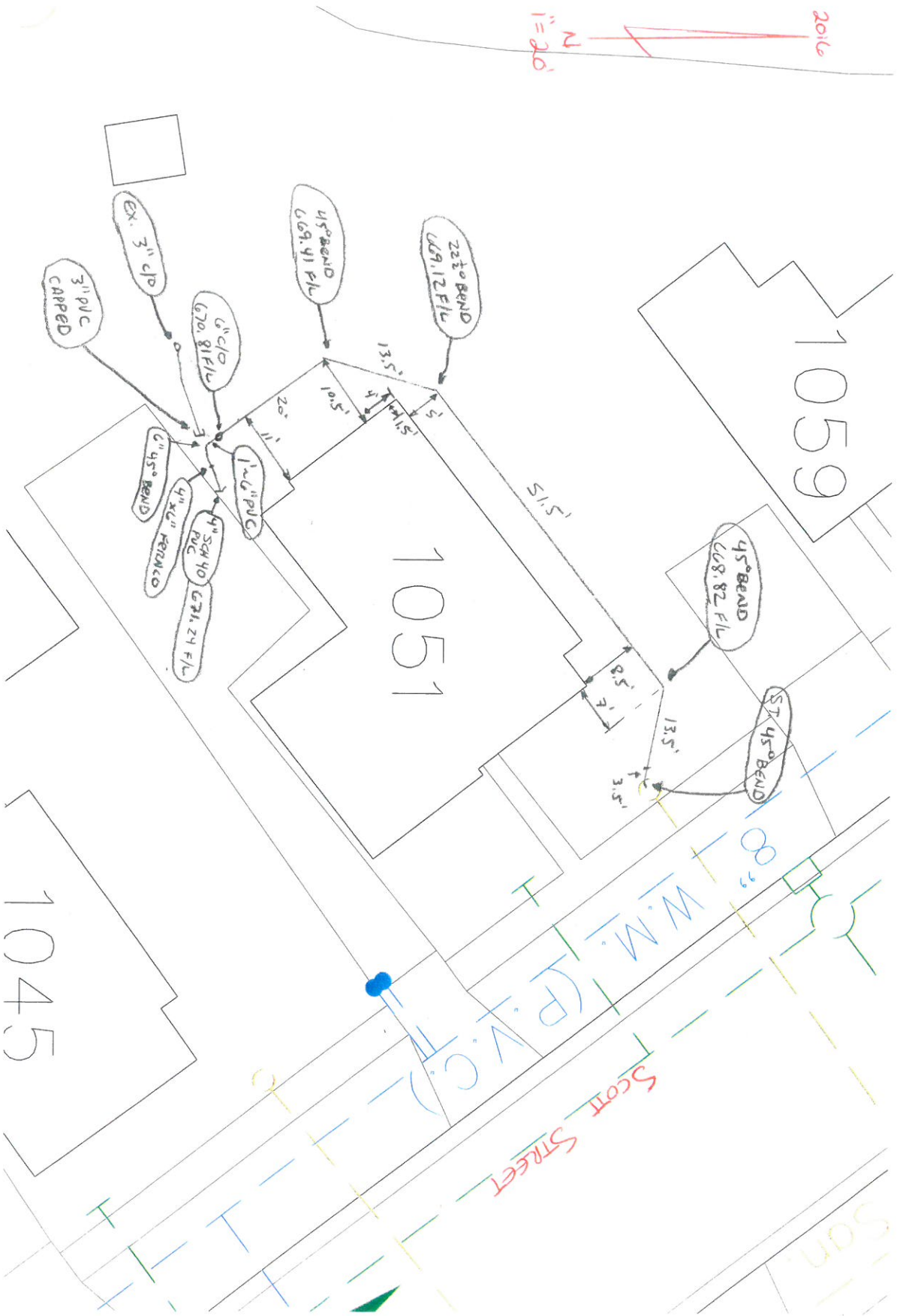


DATE: 1-20-16
 INSTALLED BY: VERNON NAGEL, INC.
 INSPECTED BY: MARY CROSSLAND

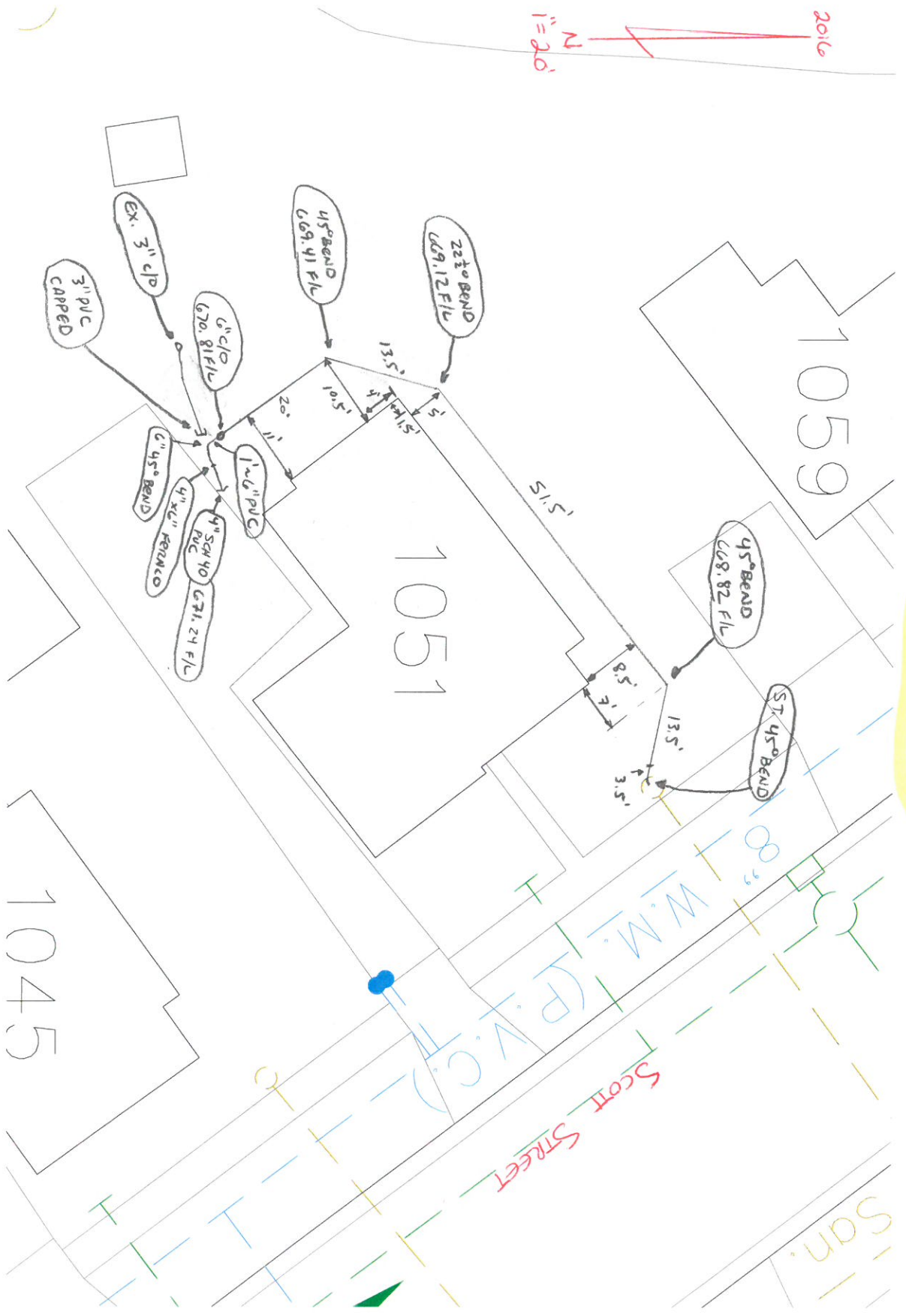
1051 SCOTT STREET
 SANITARY SEWER



WORK PERFORMED AS PART OF
 OBERHAUS INTERCEPTor I/A
 REDUCTIONS PROJECT LITCF 21A

DATE: 1-20-16
 INSTALLED BY: VERNON NAGEL, INC.
 INSPECTED BY: MARY CROSSLAND

1051 SCOTT STREET
 SANITARY SEWER



WORK PERFORMED AS PART OF
 OVERHAUL INTERCEPTOR I/I
 REDUCTION PROJECT LTRP 21A